



## DOMESTIC PROJECT HIGHLIGHTS

Acero has a diverse project portfolio which ranges from small, tight budget and schedule field-operations-driven MOC projects, numerous green/brown field facility projects ranging in size/complexity, CPFs, stand-alone gas plant projects ranging in size/complexity and numerous pipeline projects. Acero has completed over 2500 well tie-ins and associated gathering systems, oil and gas facility upgrades and can easily facilitate projects up to \$150MM TIC.



### FIELD DEVELOPMENT PROGRAMS ◆ BAYTEX ENERGY CORP. ◆ NE BC, AB, SK

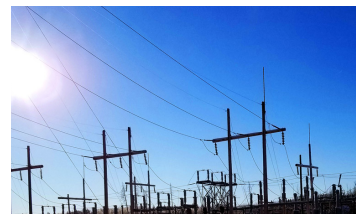
Acero has worked with Baytex since 2008 and participated in over 300 projects ranging in size and complexity throughout north east British Columbia, Alberta, and Saskatchewan. Typical projects include compressor and vapour recovery installations, gas and oil processing equipment installations, water injection. Acero has also provided Baytex with engineering design for Greenfield cold flow heavy oil installations such as tank treating, flowlines, and associated gas compression and vapour recovery.

### FLARE SYSTEM REVAMP ◆ ENBRIDGE INC. ◆ Fort Nelson, BC

Acero was responsible for the engineering and design of a new above ground flare system at the Fort Nelson gas plant. Acero's scope included the evaluation of hydraulics and liquid loading to determine the sizing for the new flare lines, stress analysis for the new above ground flare header, and electrical and instrumentation drawings for heat tracing requirements. Scope also included the evaluation of the existing below ground flare network (ie. its fitness for continued use).

### POWER GENERATION ◆ ACCEL ENERGY LTD. ◆ Central, AB

Acero provided full engineering services for the scoping, design, procurement and installation of 16 MW of power (at five locations) so as to significantly reduce reliance on utility power costs while at the same time, taking advantage of available (less costly) fuel gas.



### TANK REPLACEMENTS ◆ PENGROWTH ENERGY CORP. ◆ Judy Creek, AB

Project featured the replacement of an existing 10,000 BBL shipping tank with 3,000 BBL tank, replacement of 3,000 BBL water tank with 2,000 BBL tank, on-site jack-n-roll relocation and refurbishment of 10,000 BBL produced water storage tank (including foundation design and roof replacement), and construction planning and schedule control.

## **SPECIFICATION DEVELOPMENT FOR E & P FACILITY & PIPELINES** ♦♦ **VARIOUS** ♦♦ *Calgary, AB*

Acero has developed & implemented in-house mechanical specifications for Pembina Pipeline Corp., Baytex Energy Corp., Painted Pony Energy Ltd., Razor Energy, Accel Energy Ltd., and Pengrowth.

- ▶ Equipment specifications have included: API 610 centrifugal pumps & ASME B73.1 general sour horizontal centrifugal pumps, direct and indirect fired heaters, pressure vessels and heat exchangers and above ground knock out drums.
- ▶ Facility piping specifications have included: Manual valves and stainless steel tubing along with piping tables for B31.3, CSA B149.1, CSA Z662 for multiple services and materials.
- ▶ Other specifications and standards have included: Emergency shutdown valves, pressure welding (piping & equipment), pig closure replacement procedures, and induction bends from steel pipe.

## **METHANE EMISSION** **ENBRIDGE INC.**

*Various Sites, AB*

In response to the AER amended D60 and D17 Directives, Acero gathered data on various compressor sites to validate whether or not they required a methane reduction retrofit compliance plan (MRRCP).



## **COMMISSIONING SUPPORT** ♦♦ **ENBRIDGE INC.** ♦♦ *Fort St. John, BC*

Acero has been providing commissioning support for the shut-downs and scheduled turnarounds at the McMahon and Pine River gas plants since 2017. Acero's scope included defining roles and implementation plans to project groups, preparing and supporting commissioning activities, executing commissioning check lists, and coordinating the handover of all systems to operations.

## **WATER OFF-LOADING FACILITY**

**REPSOL OIL AND GAS CANADA INC.** ♦♦ *Edson, AB*

Acero was responsible for the EPCM of a new water off-loading facility upgrade, at the Edson Gas Plant, to render the facility capable of accepting 100m<sup>3</sup>/d of produced water. The project featured installation of access roads, two (2) 4000bbl storage tanks, containment, water transfer and condensate transfer pumps, filters, meters and piping.



## **PIPELINE PROJECT**

**POLAR STAR OIL AND GAS INC.** ♦♦ *Laprise Creek, BC*

Project featured the engineering and design, procurement, and regulatory support for a 10", 12km main trunk line with 6" parallel common ditch fuel gas pipeline, as part of a new gathering system. Crossing considerations included 7 open-cut road allowances, 18 stream crossings – three (3) of which were bored, and four (4) archaeological no work zones which were bored.



## **SEPTIMUS GAS PLANT** ♦♦ **CREW ENERGY INC.** ♦♦ *Fort St. John, BC*

Acero was responsible for the engineering, procurement and construction management of a 20 mmscfD sour gas inlet refrigeration and LPG extraction plant; then later an expansion to 60 mmscfD. Scope of work included scoping and regulatory activities, FEED and detailed design of all disciplines.